



Signature Development

TAMU HOTEL & SUITES





TAMU
HOTEL & SUITES
KUALA LUMPUR

WELCOME NOTE FROM THE GENERAL MANAGER

Dear Guests,

I would like to extend you a very warm and courteous welcome. On behalf of our **TAMU Hotel & Suites Kuala Lumpur** team, we are delighted to be given and to have the opportunity to serve you and share the warm hospitality that the hotel was founded upon.

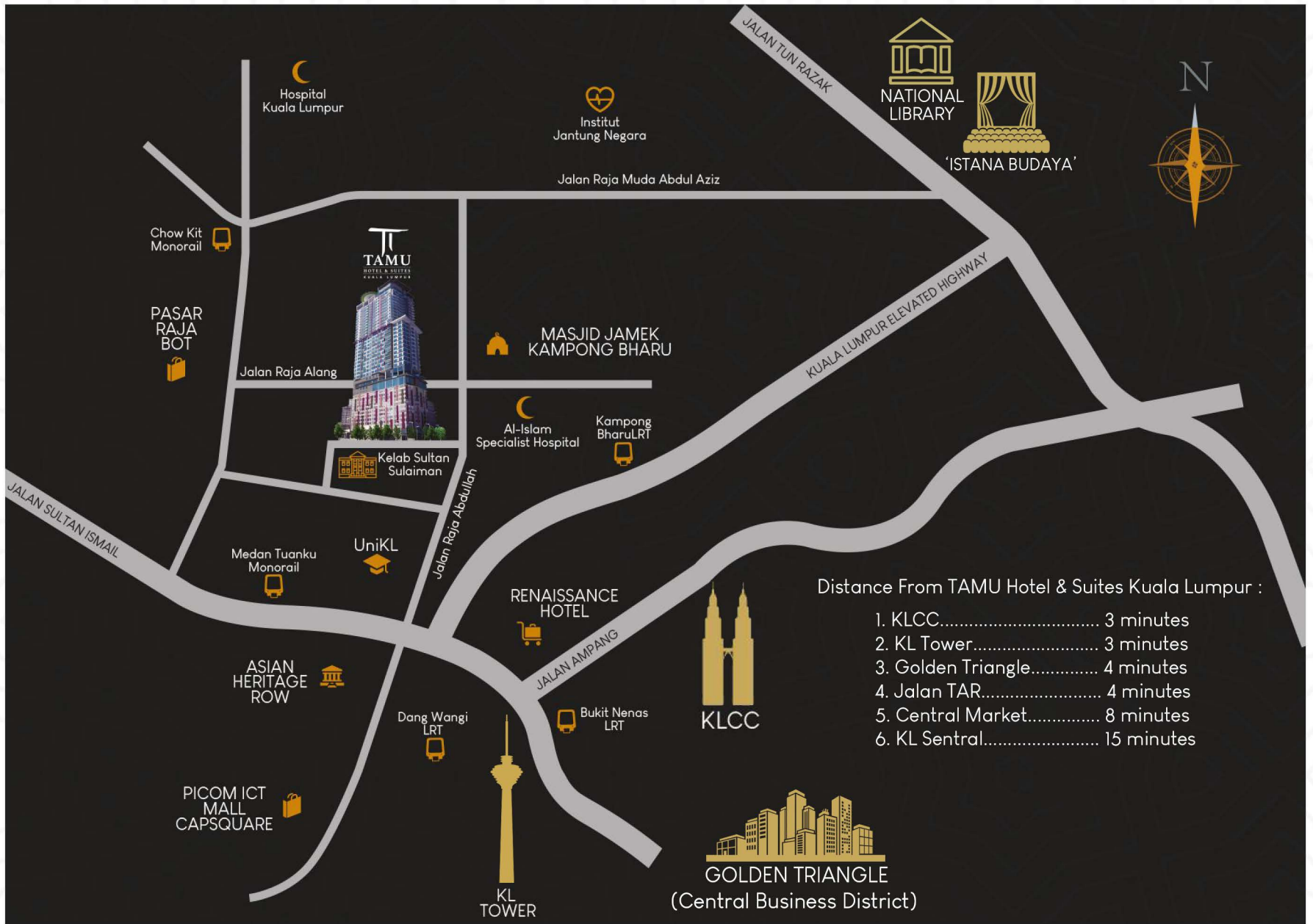
Kuala Lumpur is a melting pot of architectural styles and cultures. It is a fascinating city for every visitor. Kuala Lumpur is the capital of Malaysia and serves as focal point for both local and international businesses. There are many tourist attractions in Kuala Lumpur as well. The presence of great infrastructure has made traveling in and out of the city, hassle free.

At **TAMU Hotel & Suites Kuala Lumpur**, old age tradition and modern practices are combined with hospitality which pays careful attention to the requirements of the new traveler. Our aim is to make you feel at home, ensuring you the efficiency of five-star service and a unique travel experience.

Managing this hotel is an important, daily commitment for me, which also involves the constant training and motivation of my team, composed of people who work with passion. Drop me a line and see how we are able to ensure you an unforgettable experience with **TAMU Hotel & Suites Kuala Lumpur**.

Yours in service,

Abdul Latib Omar
General Manager
TAMU Hotel & Suites Kuala Lumpur
G/Line: +603 2603 1999
Mobile: +6012 765 1964
Email: latibomar@tamuhotel.com

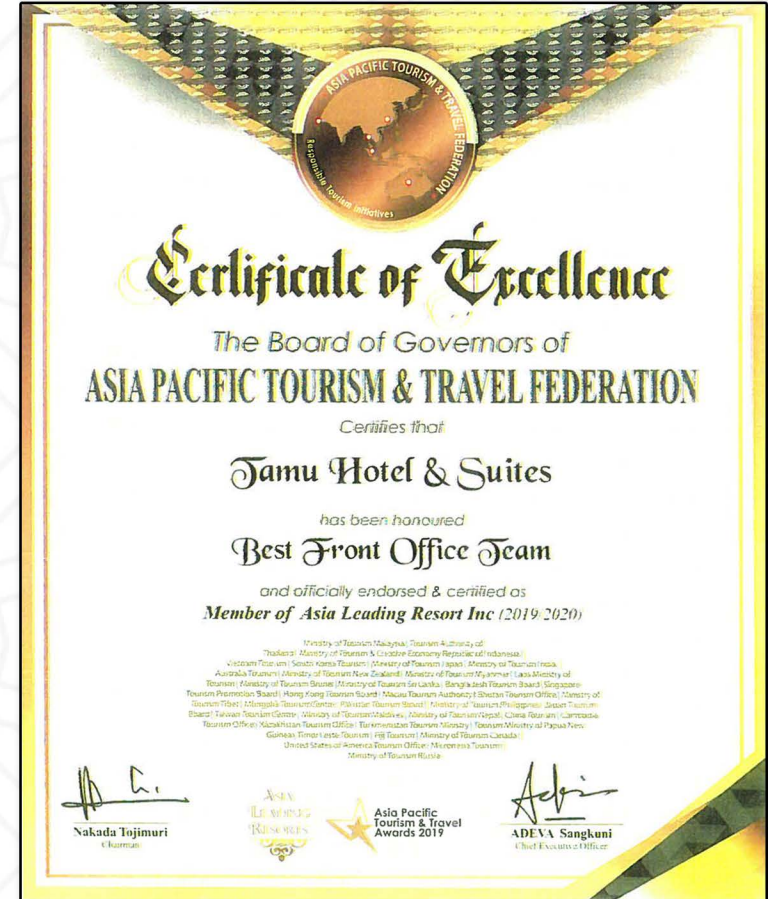
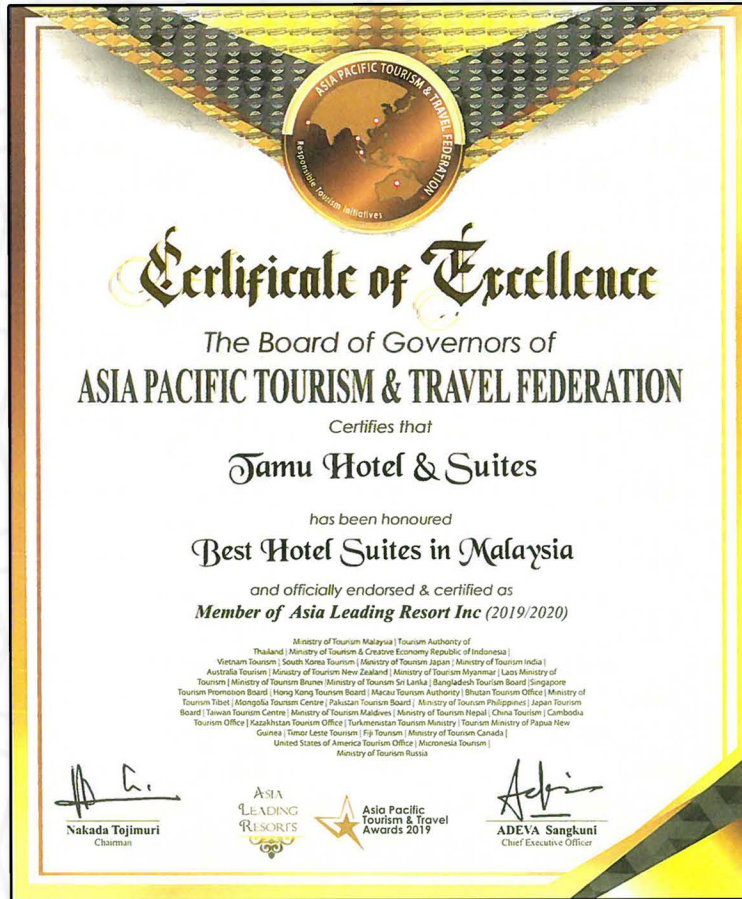


HOTEL CLASSIFICATION



TAMU Hotel & Suites Kuala Lumpur was accorded a 4****
Rating by the Ministry of Tourism, Arts and Culture Malaysia

RECOGNITION & AWARDS



TAMU Hotel & Suites Kuala Lumpur was awarded the 'Best Hotel Suites in Malaysia' and 'Best Front Office Team' by Asia Pacific Tourism & Travel Federation (APTF)

DEVELOPMENT DETAILS



ITEM	COMPONENT	UNITS
1	Hotel Rooms	276
2	Service Suites	129
3	Retails	5
4	Convention Area	3
5	S U A S A N A @ 27	1
6	Tamu Junction P L A C E	1
7	Tamu Sky L O U N G E	1
8	Gymnasium	1
9	Meeting Rooms	10
10	Swimming Pool @ Level 14	1
11	Parking Bays	346

LANDMARK VIEWS

Discover inspiring rooftop panoramas

Experience incomparable view of the city's skyline at TAMU Hotel & Suites Kuala Lumpur. Our accommodation and dining venues boasts some of the best sceneries that you could ask for.

Stay at TAMU Hotel & Suites Kuala Lumpur
Indulge in the experience.
Treasure the view





Infinity Pool at Level 14



Private Lounge at Level 40

CITY SKYLINE AT ITS BEST

In the heart of Kuala Lumpur, just minutes away from the golden triangle, Tamu Hotel & Suites offers the ultimate Kuala Lumpur location – minutes away from everything. It's an easy stroll to the best shopping areas in Kuala Lumpur and short walk towards the centre of the city.

Tamu Hotel & Suites is located in the middle of both tourist attraction and food haven.

CULTURAL DIVERSITY

It is our passion to help our guests to enjoy their very best stay in Kuala Lumpur. We connect them to their own personal interests – whether they wish to experience history, shopping, dining or entertainment.

TAMU HOTEL & SUITES



Our multicultural family



REFLECTING THE CHARACTER OF KUALA LUMPUR

Select from four exclusively designed 276 accommodation units ranging from our most comfortable Standard Room to the spacious Tamu Suite



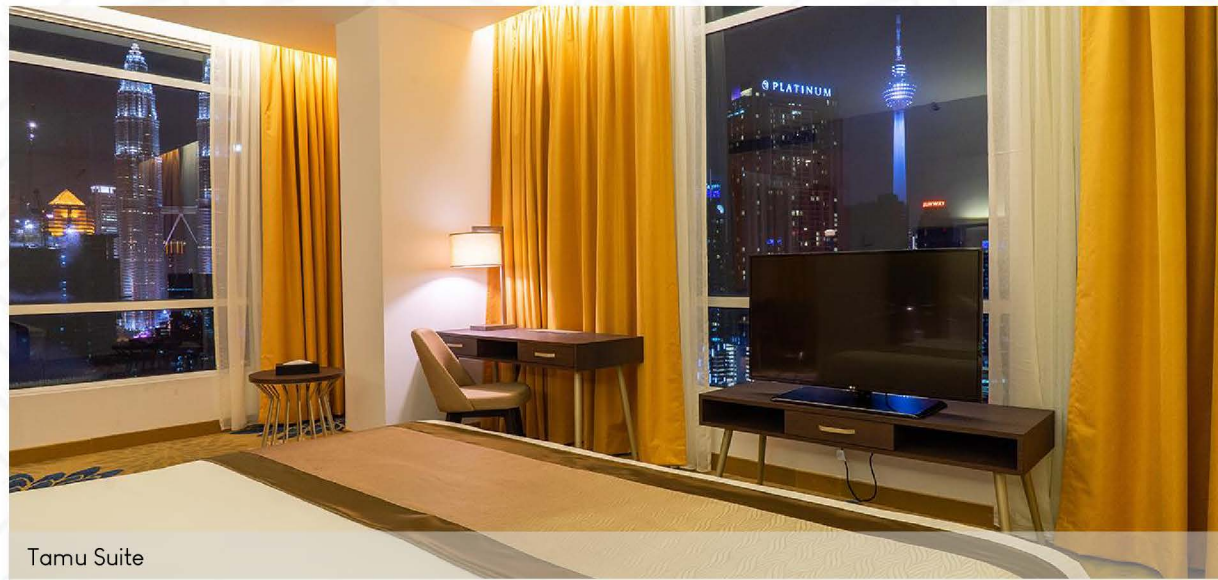
Standard Room



Deluxe Room

HOTEL & SUITES THE STYLE OF YOUR PRIVATE ROOM

Spacious and generous living room is available in any of our 276 units. Each is fully equipped with hotel amenities, plush bedding that will ensure you of a memorable experience. Each unit commands a different view of the city.



TamU Suite

YOUR KL RETREAT

With refreshing variety in style and views, our 88 suites include one, two or three bedroom units



One Bedroom Suite



Three Bedroom Suite



Living Area – One Bedroom Suite

RESIDENCE THE STYLE OF YOUR OTHER HOME

After a day of shopping and sightseeing, return to Tamu Hotel & Suites and sink into plush residential comfort. Artfully crafted in every detail, our accommodations combine classic warmth and fresh contemporary style. Select a suite with your desire room configuration.

Each of our one, two, and three room suites are well equipped with hotel style amenities.

ENTERTAIN IN ELEGANCE

Your function rooms are stunning for social events and meetings as they command splendid views on higher floors



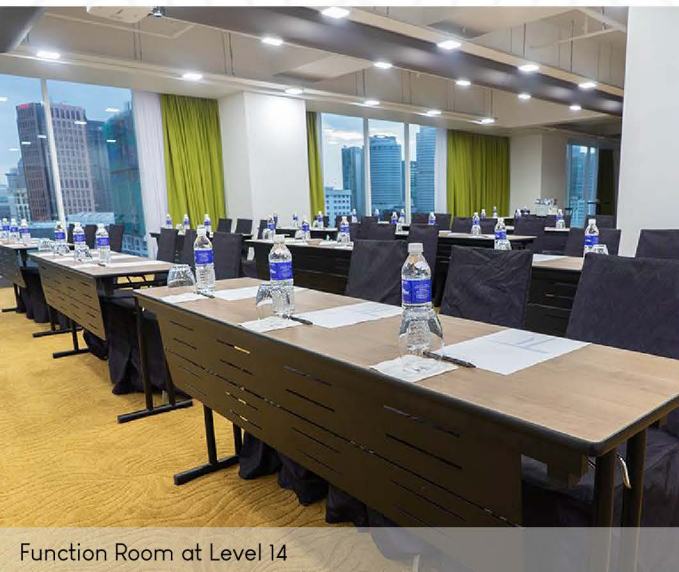
Infinity Pool at Level 14



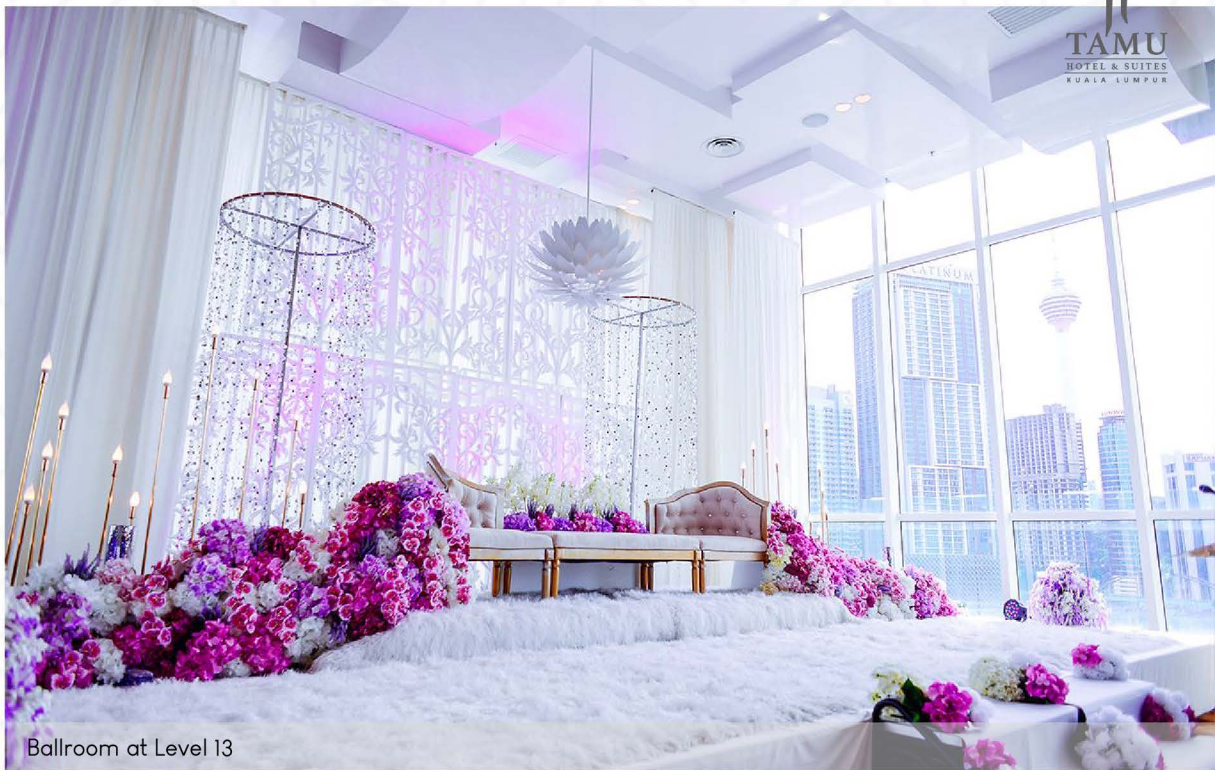
Gymnasium at Level 14M

SANCTUARY ABOVE IT ALL

Your journey to well-being begins on the 14M floor, where the gym at Tamu Hotel & Suites offers a sanctuary with 270-degree views of Kuala Lumpur. The gym features floor-to-ceiling windows, allowing natural light and vistas of the city. Afterwards, head on to Level 14 and take a dip in our infinity pool.



Function Room at Level 14



Ballroom at Level 13



The View at Level 28

KUALA LUMPUR'S MOST MEMORABLE EVENTS

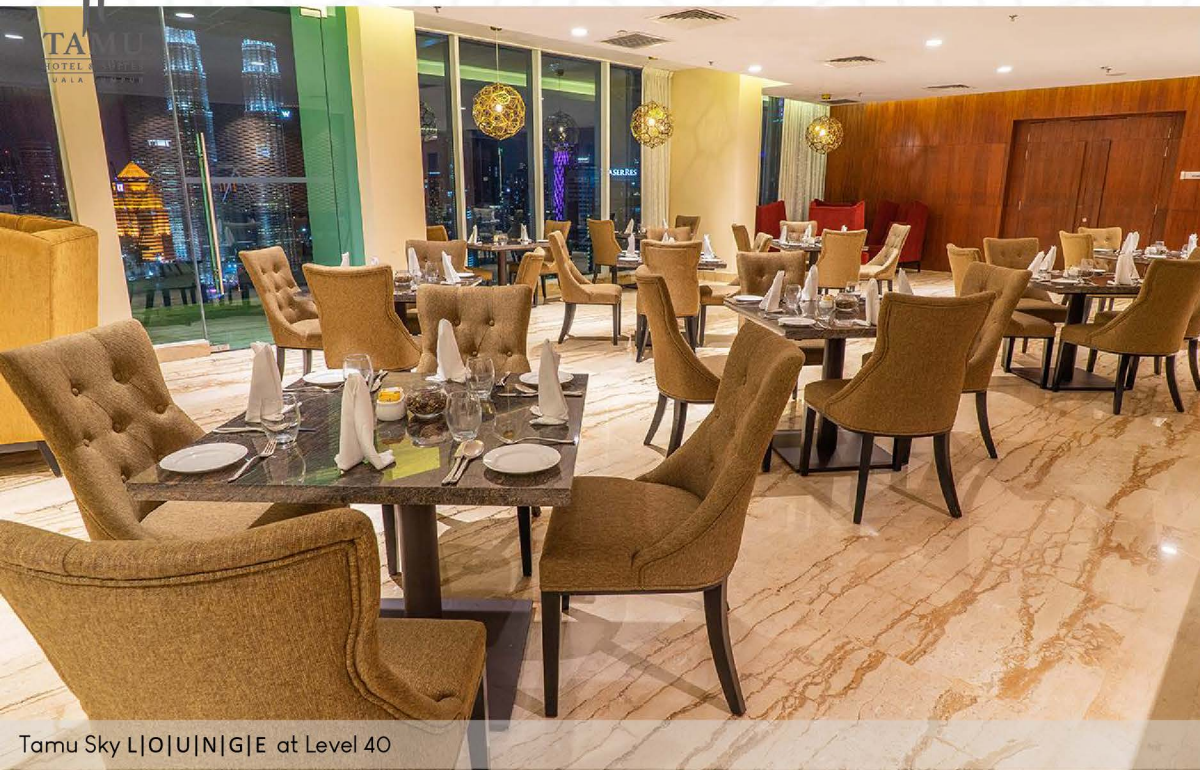
Impress your guests with Tamu Hotel & Suites sophistication – perfect for conferences, weddings or social celebrations with up to 450 in attendance. Your choices include our sunlit ballroom and ten function rooms. Our expert Sales & Marketing team promises flawless event planning and creative cuisine – creating a truly unforgettable occasion.



The View at Level 28

KUALA LUMPUR'S MOST MEMORABLE EVENTS

An outdoor entertainment venue, 'The View' on level 28 affords you an alternative to your event needs. Dine and enjoy an outdoor spectacle of Kuala Lumpur city skyline. The View is an ideal setup for gatherings of family and friends.



Tamu Sky L|O|U|N|G|E at Level 40



S|U|A|S|I|A|N|A @ 27 at Level 27



S|E|R|A|M|B|I at Level 2



Tamu Junction P|L|A|C|E at Level 1

FOUR DINING OPTIONS IN ONE

Choose from four distinctly different areas of dining at hotel. Depending on your mood, you might prefer the traditional lounge-like comfort of Serambi Lounge, the casual Tamu Junction Place, or the sunny, sophisticated Suasana @ 27. Or sit outside in the open air dining area of the Poolside Terrace. For a private dining experience, make your way to Tamu Sky Lounge on Level 40. Discover the many specialties of our local and international inspired menus.

Every dish at the hotel is prepared with care. We start by selecting the finest ingredients from local market. Our team of expert chefs puts their full attention on every plate, ensuring a delicious serving and to be remembered.

TAMU HOTEL & SUITES

OUR F&B OUTLETS



TAMU JUNCTION P|L|A|C|E

SERAMBI L|O|U|N|G|E

POOLSIDE TERRACE

SUASANA @ 27

TAMU SKY L|O|U|N|G|E



Food is comfort. We make it easy for you to enjoy a delicious meal without even leaving the hotel. Whether you are into health food, snacks, or gourmet food all the way, we've got something to tickle your palate. Stay in and use our in-room dining service or check out the onsite restaurant.



FACT SHEET

ACCOMMODATION - ROOMS

Category	Bedroom	Lounge	Size (Sq.m)	Bedding	Maximum Occupancy	No. of Units
Standard	1	N/A	27	Queen/Twin	2	91
Deluxe	1	N/A	32	Queen/Twin	2	108
Junior Suite	1	N/A	39	Queen	2	43
Executive Suite	1	1	50	Queen	2	24
TAMU Suite	1	1	66	Queen	2	5

ACCOMMODATION - SUITES

Category	Bedroom	Lounge	Size (Sq.m)	Bedding	Maximum Occupancy	No. of Units
One Bedroom Suite	1	1	From 54 and above	Queen	2	50
Two Bedroom Suite	2	1	From 82 and above	Queen & Twin	4	42
Three Bedroom Suite	3	1	From 108 and above	Queen & Twin	6	7



FACILITIES & SERVICES

24 Hour Security | Security Surveillance | Drop-Off Area | Bell Desk | Gymnasium | Lift Key Card Access (Suites) | Non-Smoking Rooms | F&B Outlets | Scheduled Shuttle Service
 ASTRO TV Channels | Digital Television | Tea & Coffee Making Facilities | Electronic Safe Box | Hair Dryer | IDD Telephone | Individually Controlled Air Condition
 International Plug Points | Mini Refrigerator | Room Service | High Speed WiFi | Parking Facilities | Surau

FUNCTION ROOMS

	Name	Size (Sq.m)	Banquet Round Table (Person)	Theatre Style (Person)	Classroom (Person)	U-Shape (Person)	Boardroom (Person)
Level 2	Meeting Room 1	52.4	20	30	15	10	8
	Meeting Room 2	46.7	20	50	20	15	10
	Meeting Room 3	47.5	20	50	20	15	10
	Meeting Room 2+3	99.1	40	100	40	30	20
	Meeting Room 4	29.2	10	20	15	N/A	N/A
	Meeting Room 5	27.3	10	20	10	N/A	8
	Meeting Room 4+5	56.5	20	40	35	N/A	N/A
Level 13	Ballroom 1	400	250	400	160	120	130
	Ballroom 2	227	150	300	70	60	66
	Ballroom 1+2	627	400	600	230	N/A	N/A
	Function Room 1	72.2	50	55	25	15	18
	Function Room 2	82.7	50	40	20	20	23
	Function Room 1+2	178.6	100	100	50	N/A	N/A
Level 14	Function Room 3	183.5	150	170	120	84	72
	Function Room 4	82.0	20	30	15	N/A	N/A
	Function Room 3+4	265.5	170	200	140	N/A	N/A
	Function Room 5	29.2	20	15	N/A	N/A	N/A
	Function Room 6	29.2	10	20	N/A	N/A	N/A
Level 40	Boardroom	48	N/A	N/A	N/A	N/A	15

FOOD & BEVERAGE

Outlets	Operation Hours	Cuisine	Seating Capacity	Indoor	Available for Private Functions
TAMU Junction P L A C E	Weekdays 7am – 12am Weekends 7am – 2am	Western Steak House	80	Yes	Yes
Serambi L O U N G E	12noon – 12am	Asian	40	Yes	Yes
Pool Terrace	11am – 8pm	Asian & International	40	Outdoor	Yes
SUASANA @ 27	Breakfast 6.30am – 10.30am Lunch 12noon – 230pm Dinner 6.30pm – 10.30pm A'la Carte 12noon – 10pm	Asian & International	300	Yes	Yes
TAMU SKY L O U N G E	Reserved for Private Events	Asian & International	50	Indoor & Outdoor	Yes

FACILITIES & SERVICES

24 Hour Security | Security Surveillance | Drop-Off Area | Bell Desk | Gymnasium | Lift Key Card Access (Suites) | Non-Smoking Rooms | F&B Outlets | Scheduled Shuttle Service
 ASTRO TV Channels | Digital Television | Tea & Coffee Making Facilities | Electronic Safe Box | Hair Dryer | IDD Telephone | Individually Controlled Air Condition
 International Plug Points | Mini Refrigerator | Room Service | High Speed WiFi | Parking Facilities | Surau

Thank You

Notes



120, Jalan Raja Abdullah, Kampong Bharu

Tel : +603 2603 1999

Fax : +603 2603 1777

Email : sales@tamuhotel.com

www.tamuhotel.com | [f](#) Tamu Hotel & Suites Kuala Lumpur | [@](#) tamuhotelsuites